



### Preface

#### About This Guide

This guide describes the monitor's features, setup, and operation. **Information in this document is subject to change without notice.**

The sections are as follows:

- [Safety Instructions](#): lists safety information.
- [Setup](#): describes the initial setup process.
- [Using the Monitor](#): gives an overview of how to use the monitor.
- [Drivers](#): provides driver installation instructions for Windows.
- [Technical Support](#): provides tips and solutions for common problems.
- [Product Information](#): lists the technical specifications of the monitor.
- [Warranty Statement](#): Warranty Statement used in Australia and New Zealand.

#### National Conventions

The following subsections describe notational conventions used in this document.

#### Notes, Cautions, and Warnings

Throughout this guide, blocks of text may be accompanied by an icon and printed in bold type or in italic type. These blocks are notes, cautions, and warnings, and they are used as follows:



**NOTE: A NOTE indicates important information that helps you make better use of your computer system.**



**CAUTION: A CAUTION indicates either potential damage to hardware or loss of data and tells you how to avoid the problem.**



**WARNING: A WARNING indicates the potential for bodily harm and tells you how to avoid the problem.**

Some warnings may appear in alternate formats and may be unaccompanied by an icon. In such cases, the specific presentation of the warning is mandated by regulatory authority

## **Safety Instructions**

### FCC Notice

#### **FCC Class B Radio Frequency Interference Statement WARNING: (FOR FCC CERTIFIED MODELS)**

**NOTE:** This equipment has been tested and found to comply with the limits for a Class B digital device, pursuant to Part 15 of the FCC Rules. These limits are designed to provide reasonable protection against harmful interference in a residential installation. This equipment generates, uses and can radiate radio frequency energy, and if not installed and used in accordance with the instructions, may cause harmful interference to radio communications. However, there is no guarantee that interference will not occur in a particular installation. If this equipment does cause harmful interference to radio or television reception, which can be determined by turning the equipment off and on, the user is encouraged to try to correct the interference by one or more of the following measures:

1. Reorient or relocate the receiving antenna.
2. Increase the separation between the equipment and receiver.
3. Connect the equipment into an outlet on a circuit different from that to which the receiver is connected.
4. Consult the dealer or an experienced radio/TV technician for help.

#### **NOTICE :**

1. The changes or modifications not expressly approved by the party responsible for compliance could void the user's authority to operate the equipment.
2. Shielded interface cables and AC power cord, if any, must be used in order to comply with the emission limits.
3. The manufacturer is not responsible for any radio or TV interference caused by unauthorized modification to this equipment. It is the responsibilities of the user to correct such interference.


### WEEE Declaration

Disposal of Waste Equipment by Users in Private Household in the European Union.



This symbol on the product or on its packaging indicates that this product must not be disposed of with your other household waste. Instead, it is your responsibility to dispose of your waste equipment by handing it over to a designated collection point for the recycling of waste electrical and electronic equipment. The separate collection and recycling of your waste equipment at the time of disposal will help to conserve natural resources and ensure that it is recycled in a manner that protects human health and the environment. For more information about where you can drop off your waste equipment for recycling, please contact your local city office, your household waste disposal service or the shop where you purchased the product.

### HG Declaration

 SAFETY: Lamp Disposal  
LAMP(S) INSIDE THIS PRODUCT CONTAIN MERCURY AND MUST BE RECYCLED OR DISPOSED OF ACCORDING TO LOCAL, STATE OR FEDERAL LAWS. FOR MORE INFORMATION, CONTACT THE ELECTRONIC INDUSTRIES ALLIANCE AT [WWW.EIAE.ORG](http://WWW.EIAE.ORG).

### Precautions



WARNING: Use of controls, adjustments, or procedures other than those specified in this documentation may result in exposure to shock, electrical hazards, and/or mechanical hazards.

Read and follow these precautions when connecting and using your computer monitor:

### PRECAUTIONS

- Do not use the monitor near water, e.g. near a bathtub, washbowl, kitchen sink, laundry tub, swimming pool or in a wet basement.
- Do not place the monitor on an unstable cart, stand, or table. If the monitor falls, it can injure a person and cause serious damage to the appliance. Use only a cart or stand recommended by the manufacturer or sold with the monitor. If you mount the monitor on a wall or shelf, use a mounting kit approved by the manufacturer and follow the kit instructions.
- Slots and openings in the back and bottom of the cabinet are provided for ventilation. To ensure reliable operation of the monitor and to protect it from overheating, be sure these openings are not blocked or covered. Do not place the monitor on a bed, sofa, rug, or similar surface. Do not place the monitor near or over a radiator or heat register. Do not place the monitor in a bookcase or cabinet unless proper ventilation is provided.
- The monitor should be operated only from the type of power source indicated on the label. If you are not sure of the type of power supplied to your home, consult your dealer or local power company.

- The monitor is equipped with a three-pronged grounded plug, a plug with a third (grounding) pin. This plug will fit only into a grounded power outlet as a safety feature. If your outlet does not accommodate the three-wire plug, have an electrician install the correct outlet, or use an adapter to ground the appliance safely. Do not defeat the safety purpose of the grounded plug.
- Unplug the unit during a lightning storm or when it will not be used for long periods of time. This will protect the monitor from damage due to power surges.
- Do not overload power strips and extension cords. Overloading can result in fire or electric shock.
- Never push any object into the slot on the monitor cabinet. It could short circuit parts causing a fire or electric shock. Never spill liquids on the monitor.
- Do not attempt to service the monitor yourself; opening or removing covers can expose you to dangerous voltages and other hazards. Please refer all servicing to qualified service personnel.
- To ensure satisfactory operation, use the monitor only with UL listed computers which have appropriate configured receptacles marked between 100 - 240V AC, Min. 5A.
- The wall socket shall be installed near the equipment and shall be easily accessible.
- For use only with the attached power adapter (Output 12Vdc) which have **UL,CSA** listed license(Only for monitors with power adapter).

## Setup

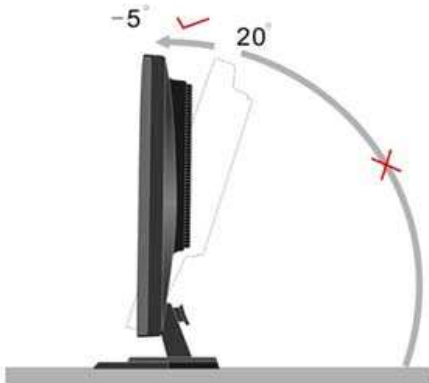
### Setup the stand and base



Please setup or remove the base following below steps.

### Adjusting Viewing Angle

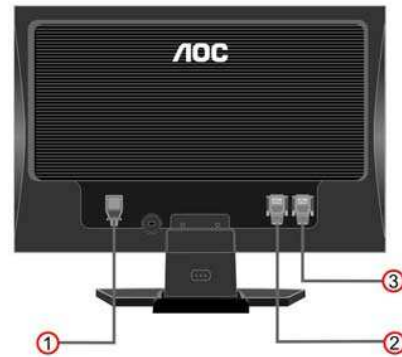
- For optimal viewing it is recommended to look at the full face of the monitor, then adjust the monitor's angle to your own preference.
- Hold the stand so you do not topple the monitor when you change the monitor's angle.
- You are able to adjust the monitor's angle from  $-5^{\circ}$  to  $20^{\circ}$ .



NOTE: Do not touch the LCD screen when you change the angle. It may cause damage or break the LCD screen.

## Attaching the Cables

### Cable Connections On Back of Monitor and Computer



- 1.Power
- 2.DVI
- 3.Analog

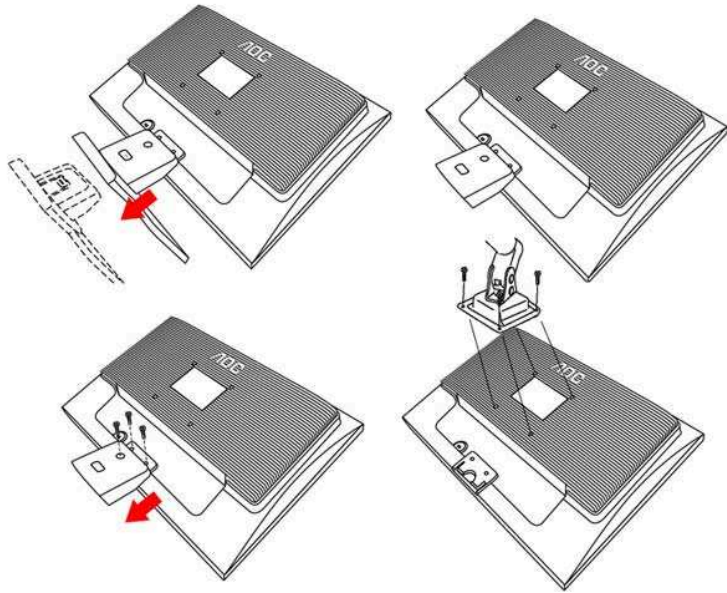
Turn off your computer before performing the procedure below.

1. Connect the power cable to the AC port on the back of the monitor.
2. Connect one end of the 15-pin D-Sub cable to the back of the monitor and connect the other end to the computer's D-Sub port.
3. (Optional - Requires a video card with DVI port) - Connect one end of the 24-pin DVI cable to the back of the monitor and connect the other end to the computer's DVI port
4. Turn on your monitor and computer.

If your monitor displays an image, installation is complete. If it does not display an image, see [Troubleshooting](#).

## Attaching Wall Mounting Arm

Preparing to Install An Optional Wall Mounting Arm



This monitor can be attached to a wall mounting arm you purchase separately. Disconnect power before this procedure. Follow these steps:

1. Remove the base.
2. Follow the manufacturer's instructions to assemble the wall mounting arm.
3. Place the wall mounting arm onto the back of the monitor. Line up the holes of the arm with the holes in the back of the monitor.
4. Insert the 4 screws into the holes and tighten.
5. Reconnect the cables. Refer to the user's manual that came with the optional wall mounting arm for instructions on attaching it to the wall.

## Using the Monitor

### Setting the Optimal Resolution

The recommended resolution for this monitor is 1680 by 1050. To setup the monitor to this resolution, follow the steps below.

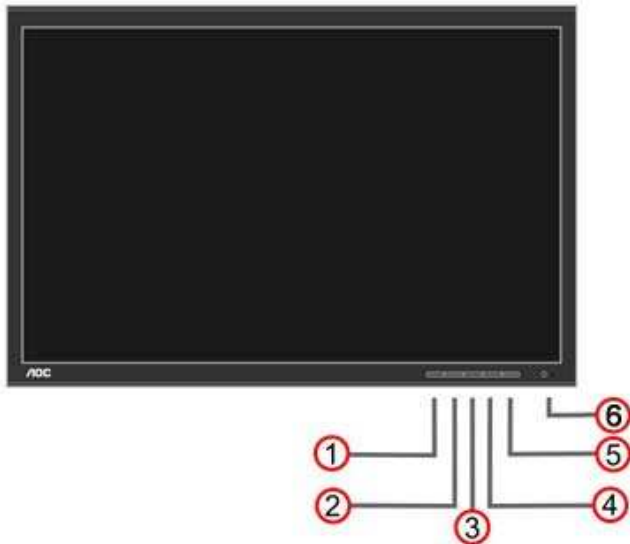
1. Click **START**.
2. Click **SETTINGS**.
3. Click **CONTROL PANEL**.
4. Double click **DISPLAY**.
5. Click **SETTINGS**.
6. Set the resolution **SLIDE-BAR** to 1680 by 1050.

### External Controls

Press the power button to turn the monitor on or off. The other control knobs are located at front panel of the monitor (See Figure ). By changing these settings, the picture can be adjusted to your personal preferences.

\* The power cord should be connected.

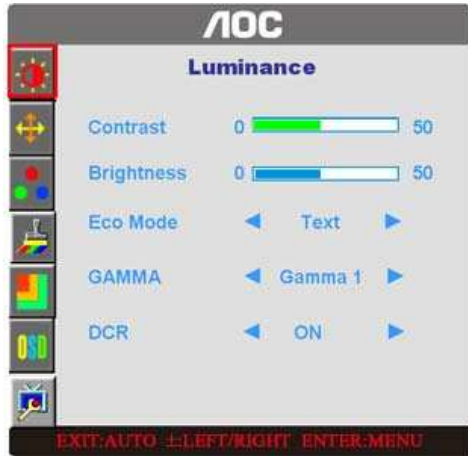
\* Press the power button to turn on the monitor. The power indicator will light up.





1. Source
2. Auto Config
3. Eco Mode/ down
4. Up
5. Menu / Enter
6. Power Button & Indicator

### OSD Settings

- Press the MENU-button to activate the OSD window.
- Press+ or - to navigate through the functions. Once the desired function is highlighted, press the MENU-button to activate it. If the function selected has a sub-menu, press or again to navigate through the sub-menu functions. Once the desired function is highlighted, press MENU-button to activate it.
- Press+ or - to change the settings of the selected function. To exit and save, select the exit function. If you want to adjust any other function, repeat steps 2-3.
- OSD Lock Function: To lock the OSD, press and hold the MENU button while the monitor is off and then press power button to turn the monitor on. To un-lock the OSD - press and hold the MENU button while the monitor is off and then press power button to turn the monitor on.



### Function Control Illustration

|   | Luminance          | Adjust Range | Description  |                   |
|---|--------------------|--------------|--|-------------------|
|   | Brightness         | 0-100        | Backlight Adjustment                                 |                   |
|   | Contrast           | 0-100        | Contrast from Digital-register.                      |                   |
|   | Eco mode           | Standard     |  | Standard Mode     |
|   |                    | Text         |  | Text Mode         |
|   |                    | Internet     |  | Internet Mode     |
|   |                    | Game         |  | Game Mode         |
|   |                    | Movie        |  | Movie Mode        |
|   | Gamma              | Sports       |  | Sports Mode       |
|   |                    | Gamma1       |  | Adjust to Gamma1  |
|   |                    | Gamma2       |  | Adjust to Gamma 2 |
| DCR   | Gamma3             |              | Adjust to Gamma 3                                    |                   |
|   | Off                |              | Disable dynamic contrast ratio                       |                   |
|   | On                 |              | Enable dynamic contrast ratio                        |                   |
|  | <b>Image Setup</b> |              |  |                   |
|   | Clock              | 0-100        | Adjust picture Clock to reduce Vertical-Line noise.  |                   |
|   | Focus              | 0-100        | Adjust Picture Phase to reduce Horizontal-Line noise |                   |
|   | H.Position         | 0-100        | Adjust the vertical position of the picture.         |                   |
|   | V.Position         | 0-100        | Adjust the horizontal position of the picture.       |                   |

|   |   |                      |   |                                  |
|---|---|----------------------|---|----------------------------------|
|    | <b>Color Temp.</b>  |                      |   |                                  |
|   | Warm  |                      | Recall Warm Color Temperature from EEPROM.                  |                                  |
|   | Normal  |                      | Recall Normal Color Temperature from EEPROM.                |                                  |
|   | Cool  |                      | Recall Cool Color Temperature from EEPROM.                  |                                  |
|   | sRGB  |                      | Recall SRGB Color Temperature from EEPROM.                  |                                  |
|   | User  | User-B               |   | Blue Gain from Digital-register  |
|   |   | User-G               |   | Green Gain Digital-register.     |
|   |   | User-R               |   | Red Gain from Digital-register   |
| User-Y  |   |                      | Yellow Gain from Digital-register                           |                                  |
| User-C  |   |                      | Cyan Gain from Digital-register                             |                                  |
|   | User-M  |                      | Magenta Gain from Digital-register                          |                                  |
|    | <b>Color Boost</b>  |                      |   |                                  |
|   | Full Enhance  | on or off            | Disable or Enable Full Enhance Mode                         |                                  |
|   | Nature Skin   | on or off            | Disable or Enable Nature Skin Mode                          |                                  |
|   | Green Field   | on or off            | Disable or Enable Green Field Mode                          |                                  |
|   | Sky-blue  | on or off            | Disable or Enable Sky-blue Mode                             |                                  |
|   | AutoDetect  | on or off            | Disable or Enable AutoDetect Mode                           |                                  |
|   | Demo  | on or off            | Disable or Enable Demo                                      |                                  |
|   |  | <b>Picture Boost</b> |   |                                  |
| Frame Size  |   | 0-100                | Adjust Frame Size   |                                  |
| Brightness  |   | 0-100                | Adjust Frame Brightness                                     |                                  |
| Contrast  |   | 0-100                | Adjust Frame Contrast                                       |                                  |
| Hue   |   | 0-100                | Adjust Frame Hue  |                                  |
| Saturation  |   | 0-100                | Adjust Frame Saturation                                     |                                  |
| Position  |   | H. position          |   | Adjust Frame horizontal Position |
|   |   | V. position          |   | Adjust Frame vertical Position   |
| Bright Frame  |   | on or off            | Disable or Enable Bright Frame                              |                                  |
|  | <b>OSD Setup</b>  |                      |   |                                  |
|   | H.Position  | 0-100                | Adjust the vertical position of OSD                         |                                  |
|   | V.Position  | 0-100                | Adjust the horizontal position of OSD                       |                                  |
|   | Timeout   | 0-100                | Adjust the OSD Timeout                                      |                                  |
|   | Language  |                      | Select the OSD language                                     |                                  |
|  | <b>Extra</b>  |                      |   |                                  |
|   | Input Select  | Digital              | Select Digital Signal Source as Input                       |                                  |
|   |   | Analog               | Select Analog Signal Source as Input                        |                                  |
|   | Auto Config   | yes or no            | Auto adjust the picture to default                          |                                  |
|   | Reset   | yes or no            | Reset the menu to default                                   |                                  |
|   | DDC-CI  |                      | Turn ON/OFF DDC-CI Support                                  |                                  |
|   | Information   |                      | Show the information of the main image and sub-image source |                                  |

## LED Indicators

| Status          | LED Color |
|-----------------|-----------|
| Full Power Mode | Green     |
| Active-off Mode | Orange    |

## **Driver**

### **Windows ME &2000**

1. Click **START**.
2. Click **SETTINGS**.
3. Select **CONTROL PANEL**.
4. From the **CONTROL PANEL**, double click the **DISPLAY** icon.
5. From the Display Properties Window, select the **SETTINGS** tab.
6. Click **ADVANCED**.
7. Click **MONITOR**.
8. Click **PROPERTIES**.
9. Click **DRIVER**.
10. Click **UPDATE DRIVER**.
11. Click **NEXT**.
12. Select "**DISPLAY** a list .....".
13. Select **HAVE DISK**.
14. Click Browse, Select "Driver" folder , choose the model you want to install (where "D" is the driver letter of your CD ROM drive)
15. Click **NEXT**.
16. Click **FINISH**.
17. Click **CLOSE**.
18. Click **OK**.
19. Click **OK**.

### **Windows XP**

1. "Right Click" the mouse anywhere on the "**BLANK**" area on the desktop and click on **PROPERTIES**.
2. Click the **SETTINGS** tab and then click **ADVANCED**.
3. Click the **MONITOR** tab and then click **PROPERTIES**.
4. Under **MONITOR PROPERTIES**, click **DRIVER** then click **UPDATE DRIVER**.
5. On the **HARDWARE UPDATE WIZARD**, select Install from a list of specific location (**ADVANCED**) then click Next.
6. On the next **HARDWARE UPDATE WIZARD** window, select **DON'T SEARCH, I WILL CHOOSE THE DRIVER TO INSTALL**. Then click **NEXT**.
7. On the following window, click on **HAVE DISK**.
8. Click Browse, Select" Driver" folder , choose the model you want to install
9. Note: If Windows prompts you that the driver is not signed, click **CONTINUE ANYWAY**.
10. On the last window of **HARDWARE UPDATE WIZARD** click **FINISH** to complete the installation.
11. After the monitor driver installation has been done, restart the computer to update the windows setup for driver installation.

## Windows Vista

1. Select **Start->Control panel**, then double click **Hardware and Sound** and enter **Display Properties**.
2. Click **Personalization**.
3. Click **Display Settings**.
4. Click **Advanced Settings**.
5. Click **Monitor**.
6. Click **Properties**.
7. Click **Driver**.
8. Select **Update Driver** then click **Update Driver Software-Generic PnP Monitor**. Click **Browse my computer for driver software**.
9. Select **Let me pick from a list of device drivers on my computer**.
10. Click **Have Disk** .Click **Browse** ,Select driver file on the disk:  
**D:\ Drivers\model name** (where "D" is the driver letter of your CD ROM drive)
11. select **.inf** file then click **Open**,then click **OK** .
12. Note: If Windows prompts you that the driver is not signed, click CONTINUE ANYWAY.
13. After the monitor driver installation has been done, restart the computer to update the windows setup for driver installation.

## Technical Support

### Frequently Asked Questions

| Problem & Question   | Possible Solutions  |
|--|---|
| <b>Power LED Is Not ON</b>   | <ul style="list-style-type: none"><li>• Make sure the power button is ON and the Power Cord is properly connected to a grounded power outlet and to the monitor.</li></ul>  |
| <b>No Plug &amp; Play</b>  | <ul style="list-style-type: none"><li>• In order for the Plug &amp; Play feature of the monitor to work, you need a Plug &amp; Play compatible computer &amp; video card. Check with your computer manufacturer. Also check the monitor's video cable and make sure none of the pins are bent.</li><li>• Make sure the AOC Monitor Drivers are installed (AOC Monitor Drivers are available at : <a href="http://www.aoc.com">http://www.aoc.com</a>)</li></ul>   |
| <b>Picture Is Fuzzy &amp; Has Ghosting Shadowing Problem</b>               | <ul style="list-style-type: none"><li>• Adjust the Contrast and Brightness Controls.</li><li>• Make sure you are not using an extension cable or switch box. We recommend plugging the monitor directly to the video card output connector on the back of your computer.</li></ul>  |
| <b>Picture Bounces, Flickers Or Wave Pattern Is Present In The Picture</b> | <ul style="list-style-type: none"><li>• Move electrical devices that may cause electrical interference as far away from the monitor as possible.</li><li>• Use the maximum refresh rate your monitor is capable of at the resolution your are using.</li></ul>  |
| <b>Monitor Is Stuck In Active Off-Mode"</b>                                | <ul style="list-style-type: none"><li>• The Computer Power Switch should be in the ON position.</li><li>• The Computer Video Card should be snugly seated in its slot.</li><li>• Make sure the monitor's video cable is properly connected to the computer.</li><li>• Inspect the monitor's video cable and make sure none of the pins are bent.</li><li>• Make sure your computer is operational by hitting the CAPS LOCK key on the keyboard while observing the CAPS LOCK LED. The LED should either turn ON or OFF after hitting the CAPS LOCK key.</li></ul> |
| <b>Missing one of the primary colors (RED, GREEN, or BLUE)</b>             | <ul style="list-style-type: none"><li>• Inspect the monitor's video cable and make sure that none of the pins are bent.</li><li>• Make sure the monitor's video cable is properly connected to the computer.</li></ul>  |
| <b>Screen image is not centered or sized properly</b>                      | <ul style="list-style-type: none"><li>• Adjust H-Position and V-Position or press hot-key (AUTO).</li></ul>   |
| <b>Picture has color defects (white does not look white)</b>               | <ul style="list-style-type: none"><li>• Adjust RGB color or select color temperature</li></ul>  |
| <b>Horizontal or vertical disturbances on the screen</b>                   | <ul style="list-style-type: none"><li>• Use win 95/98 shut-down mode Adjust CLOCK and FOCUS or perform hot-key (AUTO-key )</li></ul>  |

## Product Information

|                          |                                  |  |
|--------------------------|----------------------------------|--|
| LCD Panel                | Model number                     | 210V   |
|                          | Driving system                   | TFT Color LCD  |
|                          | Size                             | 558mm ( 22")   |
|                          | Pixel pitch                      | 0.282mm(H) x0.282 mm(V)  |
|                          | Video                            | R, G, B Analog Interface & Digital Interface                                 |
|                          | Separate Sync.                   | H/V TTL  |
|                          | Display Color                    | 16.7 million Colors  |
|                          | Dot Clock                        | 165MHz   |
| Resolution               | Horizontal scan range            | 30 kHz - 83 KHz  |
|                          | Horizontal scan Size(Maximum)    | 473mm  |
|                          | Vertical scan range              | 55 Hz - 75 Hz  |
|                          | Vertical scan Size(Maximum)      | 296mm  |
|                          | Optimal preset resolution        | 1680 x 1050 (60 Hz)  |
|                          | Highest preset resolution        | 1680 x 1050 (60 Hz)  |
|                          | Plug & Play                      | VESA DDC2B/CI  |
|                          | Input Connector                  | D-Sub 15pin & DVI-D  |
|                          | Input Video Signal               | Analog: 0.7Vp-p(standard), 75 OHM, Positive & DVI-D Digital Interface (TMDS) |
|                          | Power Source                     | 100~240VAC, 47~63Hz  |
|                          | Power Consumption                | Active < 49W<br>Standby < 1W   |
| Physical Characteristics | Connector Type                   | 15-pin Mini D-Sub & DVI-D  |
|                          | Signal Cable Type                | Detachable   |
|                          | Dimensions & Weight:             |  |
|                          | Height (with base)               | 408.39mm   |
|                          | Width                            | 507.20mm   |
|                          | Depth                            | 194.86mm   |
|                          | Weight (monitor only)            | 5.81kg   |
|                          | Weight (with packaging)          | 7.85kg   |
| Environmental            | Temperature:                     |  |
|                          | Operating                        | 0° - +50°  |
|                          | Non-Operating                    | -20° - 60°   |
|                          | Humidity:                        |  |
|                          | Operating                        | 10% to 85% (non-condensing)  |
|                          | Non-Operating                    | 5% to 80% (non-condensing)   |
|                          | Altitude:                        |  |
|                          | Operating                        | 0~ 3000m (0~ 10000 ft )  |
| Non-Operating            | 0~ 5000m (0~ 15000 ft )          |  |
| Regulations              | <b>CCC/cUL/FCC/CE/TCO03/RoHS</b> |  |

## EPA ENERGY STAR®

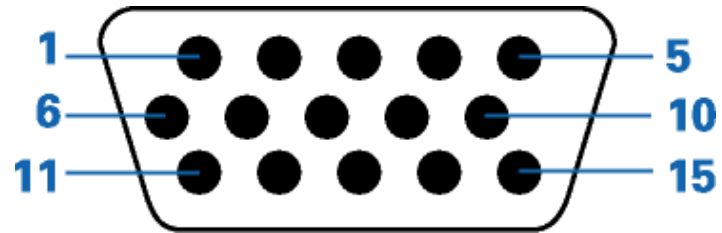


ENERGY STAR® is a U.S. registered mark. As an ENERGY STAR® Partner, AOC International (Europe) GmbH has determined that this product meets the ENERGY STAR® guidelines for energy efficiency.

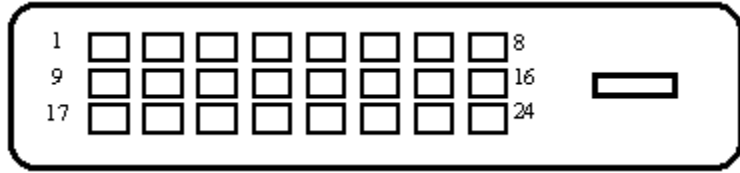
### Preset Display Modes

| <b>STAND</b> | <b>RESOLUTION</b> | <b>HORIZONTAL<br/>FREQUENCY(kHZ)</b> | <b>VERTICAL<br/>FREQUENCY(Hz)</b> |
|--------------|-------------------|--------------------------------------|-----------------------------------|
| Dos-mode     | 720 x 400         | 31.47                                | 70.0                              |
| VGA          | 640 x 480         | 31.47                                | 60.0                              |
| VGA          | 640 x 480         | 37.50                                | 75.0                              |
| SVGA         | 800 x 600         | 37.879                               | 60.0                              |
| SVGA         | 800 x 600         | 46.875                               | 75.0                              |
| XGA          | 1024 x 768        | 48.363                               | 60.0                              |
| XGA          | 1024 x 768        | 56.476                               | 70.0                              |
| XGA          | 1024 x 768        | 60.02                                | 75.0                              |
| XGA          | 1024 x 768        | 48.780                               | 60.0                              |
| XGA          | 1024 x 768        | 60.241                               | 75.0                              |
| SXGA         | 1280 x 1024       | 64.00                                | 60.0                              |
| SXGA         | 1280 x 1024       | 80.00                                | 75.0                              |
| WSXGA        | 1680 x 1050       | 65.29                                | 60.0                              |

## Pin Assignments



| Pin Number | 15-Pin Side of the Signal Cable |
|------------|---------------------------------|
| 1          | Video-Red                       |
| 2          | Video-Green                     |
| 3          | Video-Blue                      |
| 4          | N.C.                            |
| 5          | Ground                          |
| 6          | GND-R                           |
| 7          | GND-G                           |
| 8          | GND-B                           |
| 9          | +5V                             |
| 10         | Detect Cable                    |
| 11         | N.C.                            |
| 12         | DDC-Serial data                 |
| 13         | H-sync                          |
| 14         | V-sync                          |
| 15         | DDC-Serial clock                |



| Pin No. | Signal Name          | Pin No. | Signal Name          | Pin No. | Signal Name          |
|---------|----------------------|---------|----------------------|---------|----------------------|
| 1       | TMDS Data 2-         | 9       | TMDS Data 1-         | 17      | TMDS Data 0-         |
| 2       | TMDS Data 2+         | 10      | TMDS Data 1+         | 18      | TMDS Data 0+         |
| 3       | TMDS Data 2/4 Shield | 11      | TMDS Data 1/3 Shield | 19      | TMDS Data 0/5 Shield |
| 4       | TMDS Data 4-         | 12      | TMDS Data 3-         | 20      | TMDS Data 5-         |
| 5       | TMDS Data 4+         | 13      | TMDS Data 3+         | 21      | TMDS Data 5+         |
| 6       | DDC Clock            | 14      | +5V Power            | 22      | TMDS Clock Shield    |
| 7       | DDC Data             | 15      | Ground(for+5V)       | 23      | TMDS Clock +         |
| 8       | N.C.                 | 16      | Hot Plug Detect      | 24      | TMDS Clock -         |

## Plug and Play

### Plug & Play DDC2B Feature

This monitor is equipped with VESA DDC2B capabilities according to the VESA DDC STANDARD. It allows the monitor to inform the host system of its identity and, depending on the level of DDC used, communicate additional information about its display capabilities.

The DDC2B is a bi-directional data channel based on the I<sup>2</sup>C protocol. The host can request EDID information over the DDC2B channel.